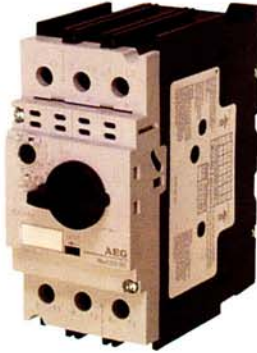


MBS63



MBS63 HG
High Interruption

Thermal and magnetic protection

Features

- Current Range 6.3 - 63 Amp
- High Interruption 50kA @ 480V
- Thermal and Magnetic Protection
- High Breaking Capacity
- Visible Trip Condition (ON-OFF-Tripped)
- Common Accessories for both MBS32 / MBS63
- Rotary Handle Operators
- Ambient Temperature Compensation (-20°C — -60°C)
(-4°F — +140°F)
- Single phase sensitivity

Standards / Approvals



Certified Test Lab Approvals
UL508 and 508E
IEC 60947-1, 60947-2, 60947-4-1
DIN VDE 0600T 100/101/102
Shipboard approvals (on request)

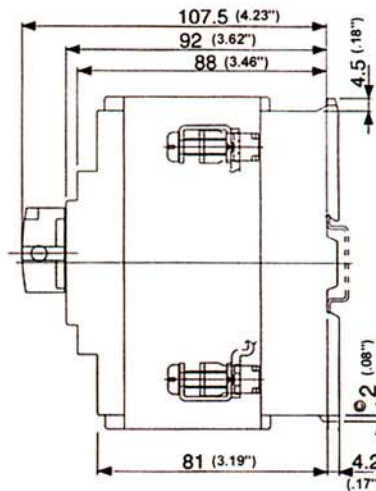
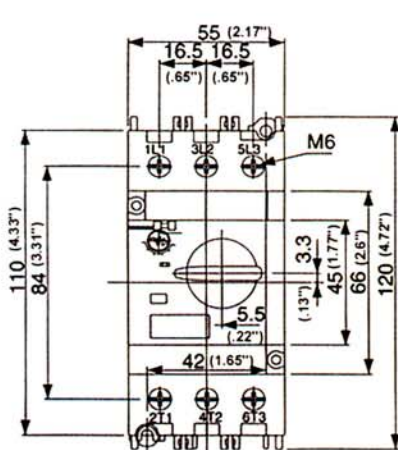
Type 2 coordination per IEC
947-4-1 when used with Type LS or
LSK Series Contactors

Technical performances

Range

- | | |
|---|---------------|
| • Rated current adjustable | 6.3 - 63A |
| • Rated operational current | 6.3 - 63A |
| • Utilization category | |
| IEC 60947-2 (Circuit Breaker) | |
| IEC 60947-4-1 (MMS) | |
| • Tripping Class 10 | |
| • Magnetic release - -13x max amp setting | |
| • Mechanical/electrical endurance | 50,000/25,000 |

Dimensions (MBS63) Series



MBS63 HG
Dimensions (Approx.)
MM (inches)

MBS63 Series 50KA INTERRUPTION CAPACITY (480V)

Key Features:

- Clear Indication of Operator Position
- Padlockable OFF Operator
- Variety of Auxiliaries to fit all models
- Trip Test Function
- Mechanical Safety Door Interlock

MBS63 CONTROLLER
"HIGH INTERRUPTION"



| FLA Adjustment Range ① | Three Phase HP ① | | | | Single Phase HP | | Short Circuit Breaking Capacity ICU KA | Instantaneous Short Circuit Trip Amps | Catalog No. | Open List Price \$ | Enclosed Nema 3R -3R | Enclosed Nema 4/12 -N4 ② |
|------------------------|------------------|----------|----------|----------|------------------|------------------|--|---------------------------------------|--------------|--------------------|----------------------|--------------------------|
| | 200-208V | 220-240V | 440-480V | 575-600V | 115V | 230V | | | | | | |
| 6.3-10 | 2 | 3 | 5 | 7-1/2 | 1/2 | 1 ^{1/2} | 100 | 130 | MBS63 HG 100 | 235 | \$410 | \$430 |
| 9-13 | 3 | 3 | 7-1/2 | 10 | 1/2 | 2 | 50 | 169 | MBS63 HG 130 | 260 | 435 | 455 |
| 11-16 | 3 | 5 | 7-1/2 | 10 | 1 | 2 | 50 | 208 | MBS63 HG 160 | 260 | 435 | 455 |
| 14-20 | 5 | 5 | 10 | 15 | 1 ^{1/2} | 2 | 50 | 260 | MBS63 HG 200 | 260 | 435 | 455 |
| 19-25 | 7-1/2 | 7-1/2 | 15 | 20 | 2 | 3 | 50 | 325 | MBS63 HG 250 | 260 | 435 | 455 |
| 24-32 | 10 | 10 | 20 | 25 | 2 | 5 | 50 | 416 | MBS63 HG 320 | 295 | 470 | 490 |
| 28-40 | 10 | 10 | 25 | 30 | 3 | 7 ^{1/2} | 50 | 520 | MBS63 HG 400 | 295 | 470 | 490 |
| 35-50 | 15 | 15 | 30 | 40 | 3 | 10 | 50 | 650 | MBS63 HG 500 | 295 | 470 | 490 |
| 45-63 | 20 | 20 | 40 | 50 | 5 | 10 | 50 | 819 | MBS63 HG 630 | 295 | 470 | 490 |

① Selection of the controller depends on the actual motor full load current and service factor. For motors with service factor of 1.15 or greater, use motor full load current to select the approximate current range. For motors with a service factor less than 1.15, multiply the normal full load current by .9 for the current setting.

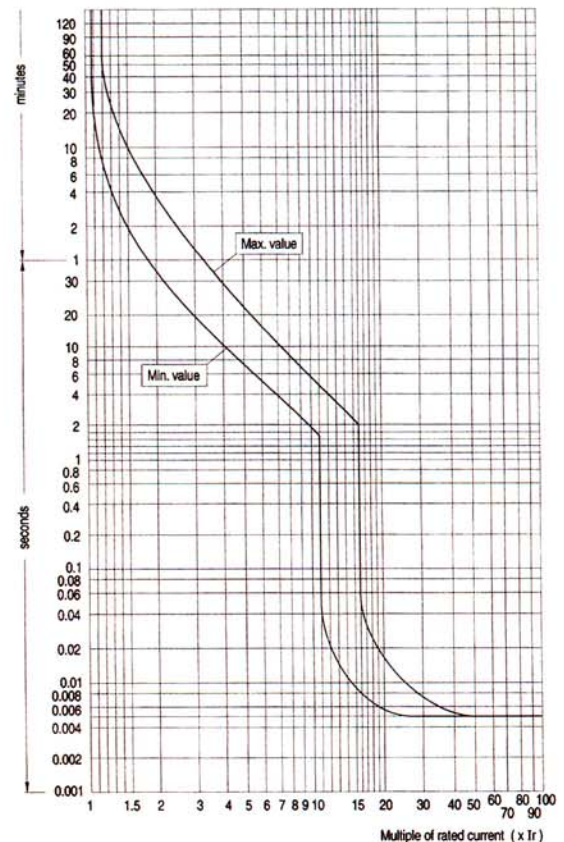
② If NEMA 4X fiberglass is desired, replace -N4 with -4X. Same price.



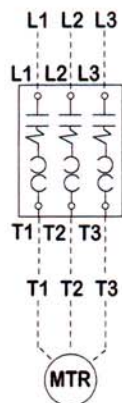
External Operator Kit - Kit Includes:

- Safety Door Interlock
 - Padlockable Handle
 - Shaft Coupling & Extension
- (See page 15)

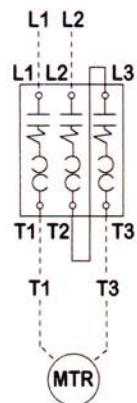
THERMAL-MAGNETIC TRIPPING CURVE MBS63...



MBS32 and MBS63 THREE PHASE AND SINGLE PHASE CONNECTIONS



THREE PHASE



SINGLE PHASE

Note on Single Phase Connections

Single Phase applications require "all three" overload legs to be energized for proper operation. Use separate jumper to connect terminals T2 to L3. Connect power to L1 and L2 and apply load between T1 and T3.