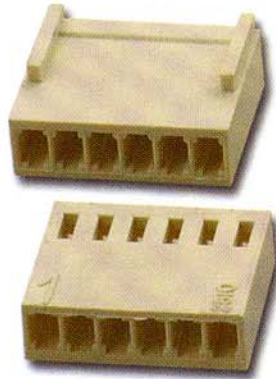


## NYLON HOUSINGS (2.54 mm)

- 0.1" (2.54mm) Centered
- 66 Nylon, UL 94. Vo
- Pins Not Included
- See Below for Male PCB Mount Counterpart

<u>MLX-HU02</u>	<u>MLX-HU12</u>
<u>MLX-HU03</u>	<u>MLX-HU13</u>
<u>MLX-HU04</u>	<u>MLX-HU14</u>
<u>MLX-HU05</u>	<u>MLX-HU15</u>
<u>MLX-HU06</u>	<u>MLX-HU16</u>
<u>MLX-HU07</u>	<u>MLX-HU17</u>
<u>MLX-HU08</u>	<u>MLX-HU18</u>
<u>MLX-HU09</u>	<u>MLX-HU19</u>
<u>MLX-HU10</u>	<u>MLX-HU20</u>
<u>MLX-HU11</u>	

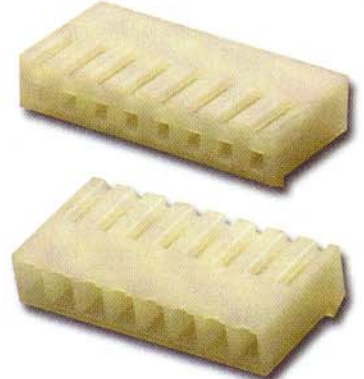


MLX-HU06

## NYLON HOUSINGS (3.96 mm)

- 3.96mm (0.156") Centered
- 66 Nylon, UL 94. Vo
- Pins Not Included
- See Below for Male PCB Mount Counterpart

<u>MLX-PHU02</u>	<u>MLX-PHU10</u>
<u>MLX-PHU03</u>	<u>MLX-PHU11</u>
<u>MLX-PHU04</u>	<u>MLX-PHU12</u>
<u>MLX-PHU05</u>	<u>MLX-PHU13</u>
<u>MLX-PHU06</u>	<u>MLX-PHU14</u>
<u>MLX-PHU07</u>	<u>MLX-PHU15</u>
<u>MLX-PHU08</u>	<u>MLX-PHU16</u>
<u>MLX-PHU09</u>	



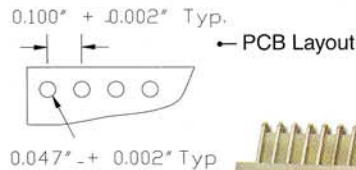
MLX-PHU07

### Right Angle

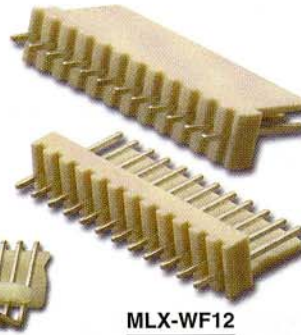
<u>MLX-WF02R</u>	<u>MLX-WF12R</u>
<u>MLX-WF03R</u>	<u>MLX-WF13R</u>
<u>MLX-WF04R</u>	<u>MLX-WF14R</u>
<u>MLX-WF05R</u>	<u>MLX-WF15R</u>
<u>MLX-WF06R</u>	<u>MLX-WF16R</u>
<u>MLX-WF07R</u>	<u>MLX-WF17R</u>
<u>MLX-WF08R</u>	<u>MLX-WF18R</u>
<u>MLX-WF09R</u>	<u>MLX-WF19R</u>
<u>MLX-WF10R</u>	<u>MLX-WF20R</u>
<u>MLX-WF11R</u>	

## NYLON PCB HEADERS (Wafer, 2.54 mm)

- 2.54mm (0.1") Centered
- Tin Plated Brass Pins
- 66 Nylon, UL 94. Vo
- Wafer is PCB Mount



MLX-WF16R



MLX-WF12

### Regular

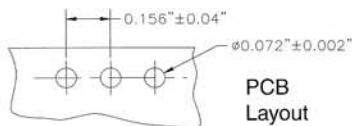
<u>MLX-WF02</u>	<u>MLX-WF12</u>
<u>MLX-WF03</u>	<u>MLX-WF13</u>
<u>MLX-WF04</u>	<u>MLX-WF14</u>
<u>MLX-WF05</u>	<u>MLX-WF15</u>
<u>MLX-WF06</u>	<u>MLX-WF16</u>
<u>MLX-WF07</u>	<u>MLX-WF17</u>
<u>MLX-WF08</u>	<u>MLX-WF18</u>
<u>MLX-WF09</u>	<u>MLX-WF19</u>
<u>MLX-WF10</u>	<u>MLX-WF20</u>
<u>MLX-WF11</u>	

### Right Angle

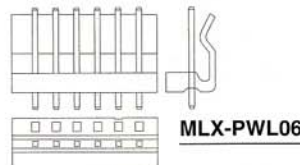
<u>MLX-PWL02R</u>	<u>MLX-PWL12R</u>
<u>MLX-PWL03R</u>	<u>MLX-PWL13R</u>
<u>MLX-PWL04R</u>	<u>MLX-PWL14R</u>
<u>MLX-PWL05R</u>	<u>MLX-PWL15R</u>
<u>MLX-PWL06R</u>	<u>MLX-PWL16R</u>
<u>MLX-PWL07R</u>	<u>MLX-PWL17R</u>
<u>MLX-PWL08R</u>	<u>MLX-PWL18R</u>
<u>MLX-PWL09R</u>	<u>MLX-PWL19R</u>
<u>MLX-PWL10R</u>	<u>MLX-PWL20R</u>
<u>MLX-PWL11R</u>	

## NYLON PCB HEADERS (Wafer, 3.96 mm)

- 3.96mm (0.156") Centered
- Tin Plated Brass Pins
- 66 Nylon, UL 94. Vo
- Wafer is PCB Mount



MLX-PWL08



MLX-PWL06

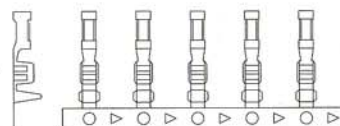
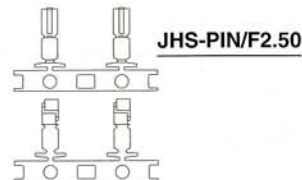
### Regular

<u>MLX-PWL02</u>	<u>MLX-PWL10</u>
<u>MLX-PWL03</u>	<u>MLX-PWL11</u>
<u>MLX-PWL04</u>	<u>MLX-PWL12</u>
<u>MLX-PWL05</u>	<u>MLX-PWL13</u>
<u>MLX-PWL06</u>	<u>MLX-PWL14</u>
<u>MLX-PWL07</u>	<u>MLX-PWL15</u>
<u>MLX-PWL08</u>	<u>MLX-PWL16</u>
<u>MLX-PWL09</u>	

## TERMINAL HOUSING PINS

- Tin Plated Copper
- Self Captive Latch
- On Reel

<u>BHS-PIN/F2.00</u>	Female Pin for BHS & HHD
<u>BLS-PIN/F</u>	Female Pin for BLS & BLD Housing
<u>JHS-PIN/F2.50</u>	Female Pin for JHS Housing
<u>KHS-PIN/F2.00</u>	Female Pin for KHS Housing
<u>MLX-PIN/F2.54</u>	Female Pin for MLX-HU Housing*
<u>MLX-PIN/F3.96</u>	Female Pin for MLX-PHU Housing*



MLX-PIN/F2.54

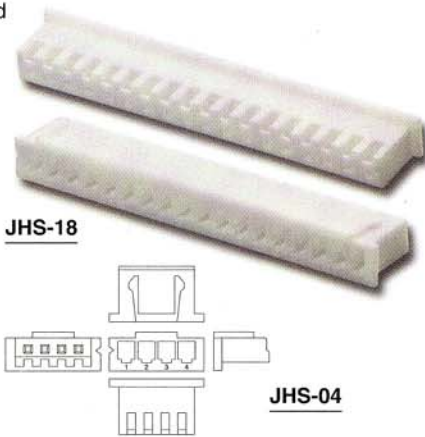


\* Crimp Tool PHT-98-601 ( See PG 52 for Details )

## NYLON HOUSINGS (2.50 mm)

- 2.50mm(0.098") Centered
- 66 Nylon, UL 94. Vo

<u>JHS-02</u>	<u>JHS-12</u>
<u>JHS-03</u>	<u>JHS-13</u>
<u>JHS-04</u>	<u>JHS-14</u>
<u>JHS-05</u>	<u>JHS-15</u>
<u>JHS-06</u>	<u>JHS-16</u>
<u>JHS-07</u>	<u>JHS-17</u>
<u>JHS-08</u>	<u>JHS-18</u>
<u>JHS-09</u>	<u>JHS-19</u>
<u>JHS-10</u>	<u>JHS-20</u>
<u>JHS-11</u>	

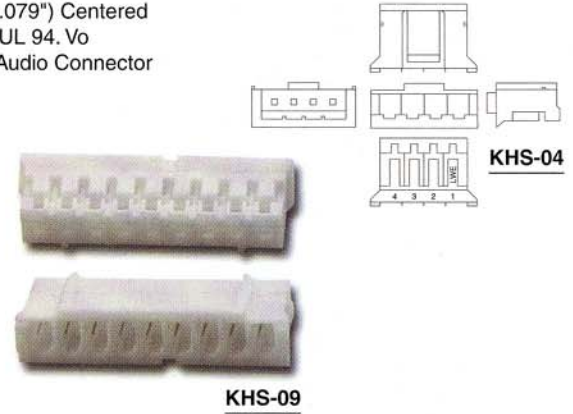


JHS-PIN/F2.50 Female Pin for JHS Housing, on Reel

## NYLON HOUSINGS (2.00 mm)

- 2.00mm(0.079") Centered
- 66 Nylon, UL 94. Vo
- CD ROM Audio Connector

<u>KHS-02</u>
<u>KHS-03</u>
<u>KHS-04</u>
<u>KHS-05</u>
<u>KHS-06</u>
<u>KHS-07</u>
<u>KHS-08</u>
<u>KHS-09</u>
<u>KHS-10</u>



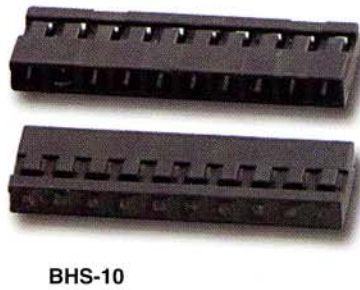
KHS-PIN/F2.00 Female Pin for KHS Housing, on Reel

*\* Other number of pins also available, please call for Quote*

## BLACK TERMINAL HOUSINGS (2.00 mm)

- 2.00mm(0.079 ") Centered
- Mini Latch
- Single Row

<u>BHS-02</u>	<u>BHS-07</u>
<u>BHS-03</u>	<u>BHS-08</u>
<u>BHS-04</u>	<u>BHS-09</u>
<u>BHS-05</u>	<u>BHS-10</u>
<u>BHS-06</u>	<u>BHS-20</u>



BHS-PIN/F2.00 Female Housing Pin for BLS & BLD Series, on Reel

<u>BHD-2X2</u>	04 Pins
<u>BHD-2X3</u>	06 Pins
<u>BHD-2X4</u>	08 Pins
<u>BHD-2X5</u>	10 Pins
<u>BHD-2X6</u>	12 Pins
<u>BHD-2X7</u>	14 Pins
<u>BHD-2X8</u>	16 Pins
<u>BHD-2X9</u>	18 Pins
<u>BHD-2X10</u>	20 Pins
<u>BHD-2X22</u>	44 Pins
<u>BHD-2X25</u>	50 Pins

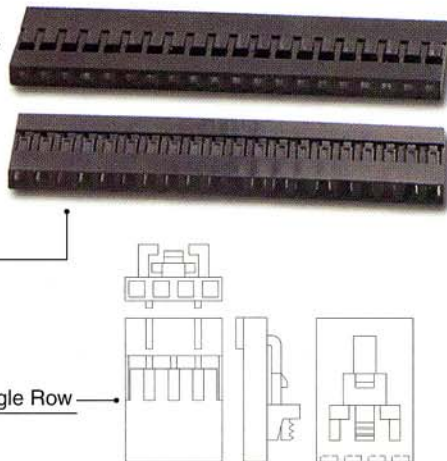


BHD-2x9

## BLACK TERMINAL HOUSINGS (2.54 mm)

- 2.4mm(0.1") Centered
- Mini Latch
- Mates with 0.025" Pins
- Single Row

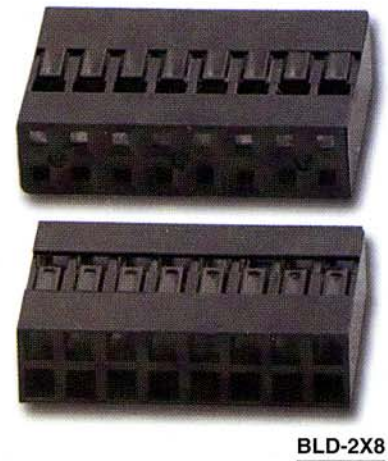
<u>BLS-01</u>	<u>BLS-07</u>
<u>BLS-02</u>	<u>BLS-08</u>
<u>BLS-03</u>	<u>BLS-09</u>
<u>BLS-04</u>	<u>BLS-10</u>
<u>BLS-05</u>	<u>BLS-20</u>
<u>BLS-06</u>	<u>BLS-40</u>



BLS-4K 4C Keyed, Single Row

BLS-PIN/F Female Housing Pin for BLS & BLD Series

<u>BLD-2X2</u>	4 Pins
<u>BLD-2X3</u>	6 Pins
<u>BLD-2X4</u>	8 Pins
<u>BLD-2X5</u>	10 Pins
<u>BLD-2X6</u>	12 Pins
<u>BLD-2X7</u>	14 Pins
<u>BLD-2X8</u>	16 Pins
<u>BLD-2X9</u>	18 Pins
<u>BLD-2X10</u>	20 Pins
<u>BLD-2X20</u>	40 Pins
<u>BLD-2X22</u>	44 Pins
<u>BLD-2X25</u>	50 Pins



BLD-2X8