



Ordering Information

Typical Part Number ▶

V23050

A1

012

A

5

33

1. Basic Series:

V23050 = SR6 safety relay.

2. Enclosure:

A1 = Sealed.

3. Coil Voltage:

005 = 5VDC    006 = 6VDC    009 = 9VDC    012 = 12VDC    021 = 21VDC  
 024 = 24VDC    040 = 40VDC    060 = 60VDC    085 = 85VDC    110 = 110VDC

4. Contact Type:

A = Single contact.

5. Contact Material:

5 = Silver nickel.

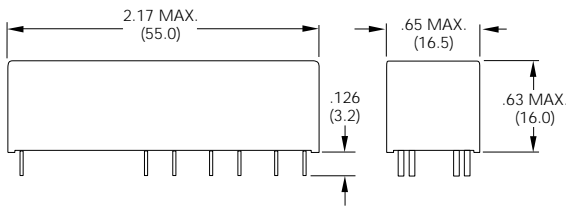
6. Contact Arrangement:

33 = 3 NO and 3 NC.  
 42 = 4 NO and 2 NC.  
 51 = 5 NO and 1 NC.

Stock Items – The following (3,2) are maintained in stock.

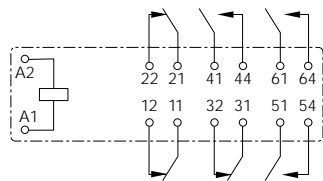
No items in this series are stocked.

Outline Dimensions

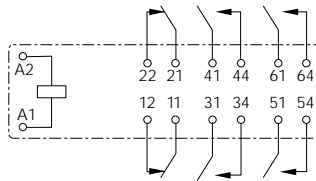


Wiring Diagrams (Bottom Views)

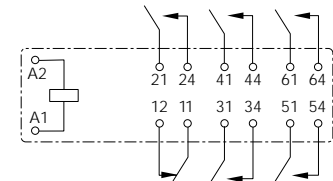
3 NO and 3 NC



4 NO and 2 NC

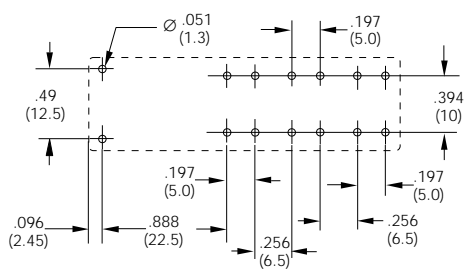


5 NO and 1 NC



Suggested PC Board Layouts (Bottom Views)

3 NO and 3 NC, 4 NO and 2 NC



5 NO and 1 NC

