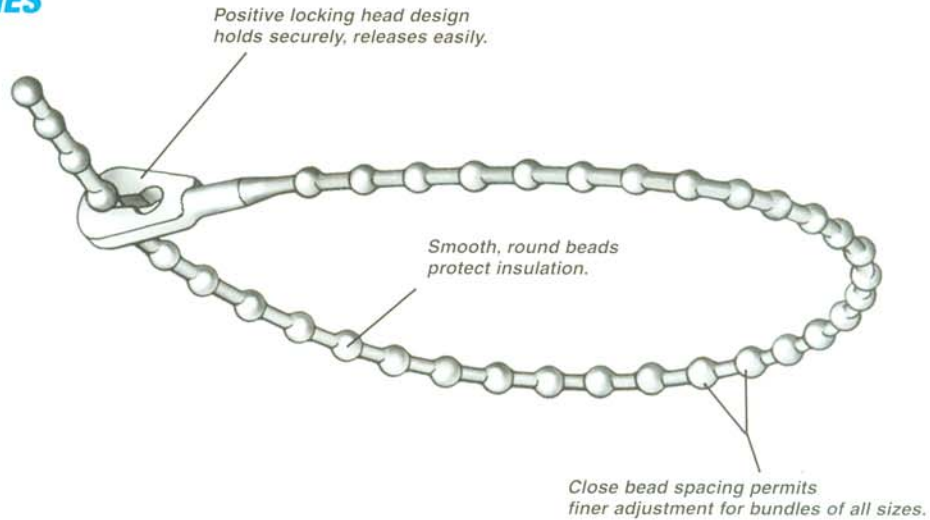
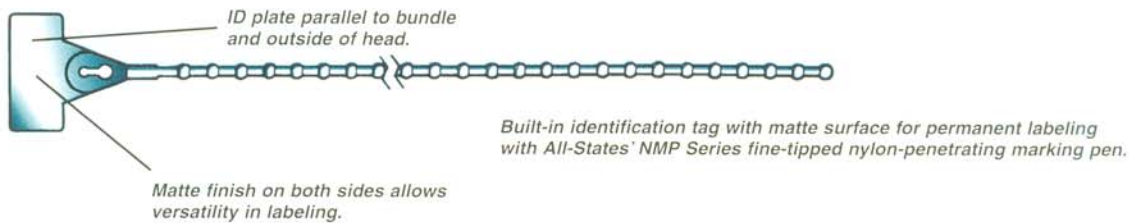


**BEADED CABLE TIES**



**BEADED IDENTIFICATION CABLE TIES**



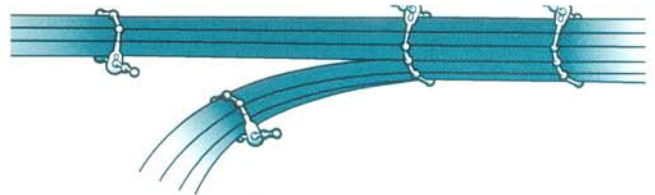
**Beaded Mounting Base**

**ABM-1**

- 4-way entry with rounded openings accept all sizes of All-States beaded cable ties.
- Adhesive-backed base has holes for optional #6 screws for added holding strength and for use outdoors.

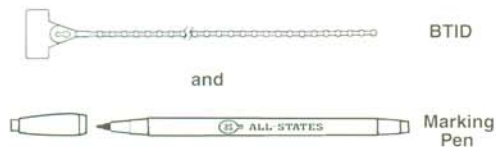


ABM-1



Beaded cable ties are reusable and make temporary or permanent bundling a simple operation.

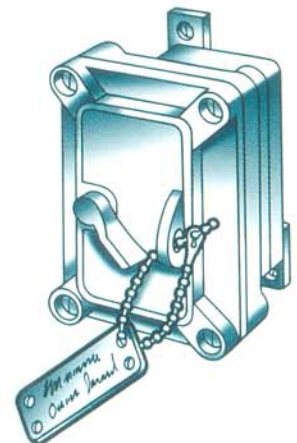
**Identification Cable Ties with Nylon Marking Pen Packs:**



**Tie/Pen Packs**

- **BTIDK-1** includes 50 BTID-10N cable ties and one nylon black marking pen.
- **BTIDK-2** includes 50 BTID-14N cable ties and one nylon black marking pen.
- **BTIDK-3** includes 50 BTID-17N cable ties and one nylon black marking pen.

In addition to tagging equipment with permanent information, beaded cable ties provide an easy, visible method for temporary safety tagging during maintenance operation.





**Compliances**

The basic and modified Type nylons used in All-States Beaded Cable Ties meet UL94V-2 Flammability Classification. Fire-retardant Type 66 nylon meets UL94V-0, as does Tezel. Low-density polyethylene is not rated.

**Ordering Information**

**Materials:** Factory-stocked BT Series beaded cable ties include Type 66 nylon in natural; and low-density polyethylene in natural and black.

**Colors:** Beaded cable ties can be special ordered in a wide variety of colors using basic Type 66 nylon or polyethylene. Use the following dash numbers for colors: -0 (Black), -1 (Brown), -2 (Red), -3 (Orange), -4 (Yellow), -5 (Green), -6 (Blue), -7 (Purple), -8 (Gray), -9 (Natural).

**Beaded Cable Ties**

Model No.	Min. Loop Tensile Strength		Max. Bundle Diameter		Approx. Length		Bead Diameter		Bead Spacing	
	Lbs.	(Kg)	In.	(mm)	In.	(mm)	In.	(mm)	In.	(mm)
<b>Nylon</b>										
BT-4N	40	(18.0)	1.13	(29)	4.25	(108)	.09	(2.3)	.13	(3.3)
BT-5N	40	(18.0)	1.38	(35)	5.00	(127)	.09	(2.3)	.13	(3.3)
BT-6N	75	(33.8)	1.88	(47)	6.75	(172)	.13	(3.3)	.25	(6.4)
BT-8N	75	(33.8)	2.50	(64)	9.00	(229)	.13	(3.3)	.25	(6.4)
BT-10N	75	(33.8)	3.00	(76)	11.00	(279)	.13	(3.3)	.25	(6.4)
BT-14N	75	(33.8)	4.00	(102)	15.00	(381)	.13	(3.3)	.25	(6.4)
BT-17N	75	(33.8)	5.00	(127)	18.00	(457)	.13	(3.3)	.25	(6.4)
<b>Polyethylene</b>										
BT-4PE	10	(4.5)	1.13	(29)	4.25	(108)	.09	(2.3)	.13	(3.3)
BT-5PE	10	(4.5)	1.38	(35)	5.00	(127)	.09	(2.3)	.13	(3.3)
BT-6PE	18	(8.1)	1.88	(48)	6.75	(172)	.13	(3.3)	.25	(6.4)
BT-8PE	18	(8.1)	2.50	(64)	9.00	(229)	.13	(3.3)	.25	(6.4)
BT-10PE	18	(8.1)	3.00	(76)	11.00	(279)	.13	(3.3)	.25	(6.4)
BT-14PE	18	(8.1)	4.00	(102)	15.00	(381)	.13	(3.3)	.25	(6.4)
BT-17PE	18	(8.1)	5.00	(127)	18.00	(457)	.13	(3.3)	.25	(6.4)
<b>Nylon with Identification Tag, Matte-Finish for Permanent Labeling</b>										
BTID-10N	75	(33.8)	3.00	(76)	11.00	(279)	.13	(3.3)	.25	(6.4)
BTID-14N	75	(33.8)	4.00	(102)	15.00	(381)	.13	(3.3)	.25	(6.4)
BTID-17N	75	(33.8)	5.00	(127)	18.00	(457)	.13	(3.3)	.25	(6.4)
<b>Polyethylene with Identification Tag, Matte-Finish for Permanent Labeling</b>										
BTID-10PE	18	(8.1)	3.00	(76)	11.00	(279)	.13	(3.3)	.25	(6.4)
BTID-14PE	18	(8.1)	4.00	(102)	15.00	(381)	.13	(3.3)	.25	(6.4)
BTID-17PE	18	(8.1)	5.00	(127)	18.00	(457)	.13	(3.3)	.25	(6.4)

**Beaded Mounting Base**

Model No.	Base Dimensions		2-way or 4-way Entry	Thickness		Screw Hole Size	
	In.	(mm)		In.	(mm)	No.	(mm)
ABM-1	.75 x .75	(19 x 19)	4	.31	(7.9)	2-No. 8	(4.1)

**Beaded Identification Cable Ties with Nylon Marking Pen**

Our most popular identification cable ties with matte surface for permanent labeling are conveniently packaged with our fine-tipped nylon-penetrating black marking pen.

Model No.	Min. Tensile Strength		Max. Bundle Diameter		Length		No. Pieces	Cable Tie Style
	Lbs.	(Kg)	In.	(mm)	In.	(mm)		
BTIDK-1	75	(33.8)	3.00	(76)	11.00	(279)	50	BTID
BTIDK-2	75	(33.8)	4.00	(102)	15.00	(381)	50	BTID