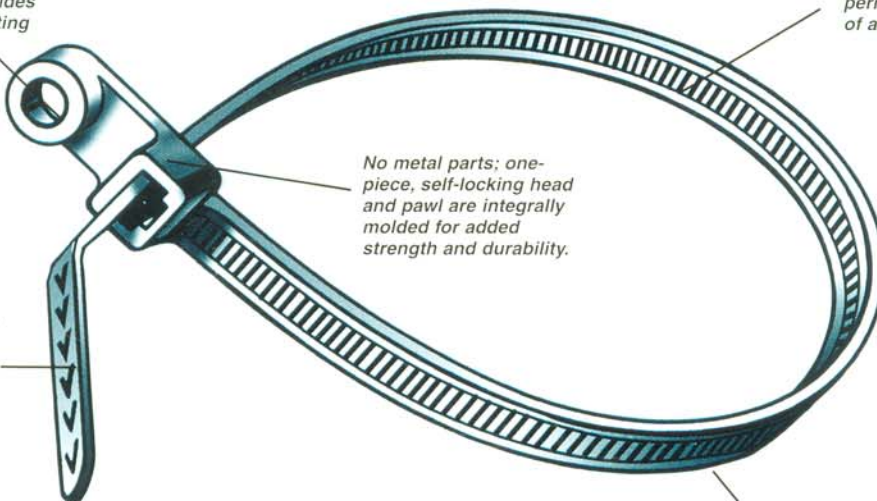


Molded-in screw hole mount provides one-piece mounting and bundling.

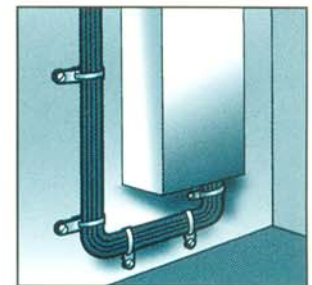
Closely spaced positive-locking teeth permit fine adjustment to tie bundles of all sizes.

No metal parts: one-piece, self-locking head and pawl are integrally molded for added strength and durability.

V-Shaped raised ridges on bent tip give a sure grip and easier pull-up.



Smooth, rounded edges do not cut insulation—or hands—and are comfortable to work with.



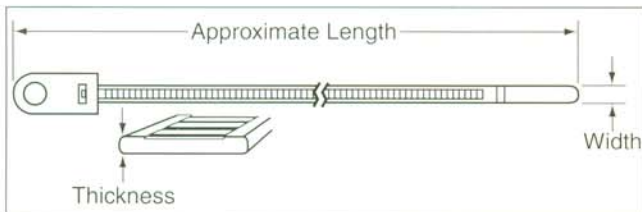
RTM and RTHM Series cable ties can both contain and mount a bundle on any surface that will accept a screw or rivet, where permitted by applicable codes.

**MOUNTING-HOLE CABLE TIES**

RTM and RTHM Series (18# thru 120# tensile strength) are available in Miniature (18 lbs.), Compact (30 lbs.), Intermediate (40 lbs.), Standard (50 lbs.) and Heavy (120 lbs.) cross sections, in lengths 4.5" to 29" for bundles from .0625 to 8" diameters.

**Compliances**

RTM and RTHM mounting-hole cable ties are recognized under the Component Program of Underwriters Laboratories Inc. for use at temperatures not exceeding 85° C (185° F). File No. E76766(N). The basic and modified Type 66 nylons used in All-States RTM and RTHM Series mounting cable ties meet UL94V-2 Flammability Classification. Fire-retardant Type 66 nylon meets UL 94V-0. All RTM and RTHM Series cable ties are manufactured to the same Mil Spec quality standards required by MS-3367.



**Ordering Information**

Materials: Factory-stocked RTM and RTHM cable ties include Type 66 nylon in natural and black; and outdoor, weather-resistant/UV-stabilized in black.

**Mounting-Hole Cable Ties**

| Model No.          | Min. Loop Tensile Strength |      | Max. Bundle Diameter |       | Approx. Length |       | Strap Width |       | Strap Thickness |       | Cross Section Series <sup>①</sup> | Screw Hole Size |       |
|--------------------|----------------------------|------|----------------------|-------|----------------|-------|-------------|-------|-----------------|-------|-----------------------------------|-----------------|-------|
|                    | Lbs.                       | (Kg) | In.                  | (mm)  | In.            | (mm)  | In.         | (mm)  | In.             | (mm)  |                                   | In.             | (mm)  |
| <b>RTM Series</b>  |                            |      |                      |       |                |       |             |       |                 |       |                                   |                 |       |
| RTM-304            | 18                         | (8)  | 1.00                 | (25)  | 4.50           | (114) | .100        | (2.5) | .045            | (1.1) | M                                 | No. 4           | (2.8) |
| RTM-400            | 30                         | (14) | 1.00                 | (25)  | 5.50           | (140) | .115        | (2.9) | .045            | (1.1) | C                                 | No. 4           | (2.8) |
| RTM-550            | 40                         | (18) | 1.25                 | (32)  | 6.50           | (165) | .135        | (3.4) | .050            | (1.3) | I                                 | No. 8           | (4.1) |
| RTM-675            | 50                         | (23) | 1.75                 | (45)  | 8.00           | (203) | .190        | (4.8) | .055            | (1.4) | S                                 | No. 10          | (4.8) |
| RTM-1100           | 50                         | (23) | 3.00                 | (76)  | 12.00          | (305) | .190        | (4.8) | .055            | (1.4) | S                                 | No. 10          | (4.8) |
| RTM-1400           | 50                         | (23) | 4.00                 | (102) | 15.00          | (381) | .190        | (4.8) | .055            | (1.4) | S                                 | No. 10          | (4.8) |
| <b>RTHM Series</b> |                            |      |                      |       |                |       |             |       |                 |       |                                   |                 |       |
| RTHM-1400          | 120                        | (54) | 4.00                 | (102) | 15.00          | (381) | .310        | (7.9) | .083            | (2.1) | H                                 | .25             | (6.4) |
| RTHM-2100          | 120                        | (54) | 6.00                 | (152) | 22.00          | (559) | .310        | (7.9) | .083            | (2.1) | H                                 | .25             | (6.4) |
| RTHM-2800          | 120                        | (54) | 8.00                 | (203) | 29.00          | (737) | .310        | (7.9) | .083            | (2.1) | H                                 | .25             | (6.4) |

<sup>①</sup> Cross-Section Series (tensile strength): M = Miniature (18#); C = Compact (30#); I = Intermediate (40#); S = Standard (50#); and H = Heavy (120#).