

Metal-bodied safety switch with personnel protection function in forward and reverse movement

ENM2-AHZ

Protection class IP 65



Designation

Part number

Circuit diagram

⊕ Forced disconnect to

IEC 947-5-1 chapter 3

Za: not galvanically separated contacts

Zb: galvanically separated contacts

Slow make & break/snap-action

Internal seal (iw)/external seal (w)

ENM2-U1Z AHZ

608.7135.030

11 — 12

23 — 24

⊕ Zb

●/-

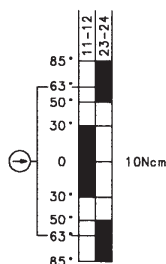
iw

Switching angle °
Tol. ± 3.5°



Actuator torque Ncm
Tol. ± 10%

On Off



Voltage max. 400 V AC

Permanent current max. 10 A

In-rush current complies with standards

IEC 947-5-1 AC 15/DC 13

Switching frequency max. 100/min.

Mechanical life – number of switching actions 1 x 10⁶

Operating temperature min./max. -30 °C/+80 °C

-22 °F/+176 °F

Approvals

Weight

Delivery: ex-stock/built to order

400 V AC

10 A

●

100/min.

1 x 10⁶

-30 °C/+80 °C

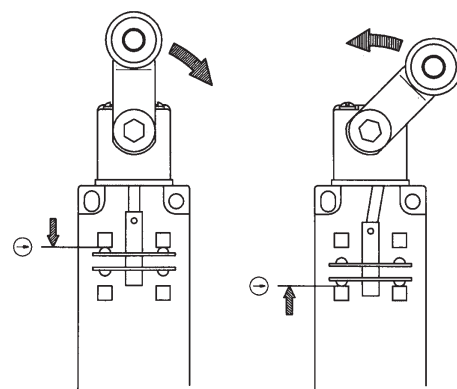
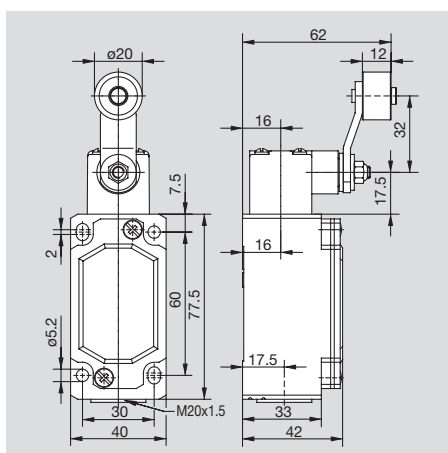
-22 °F/+176 °F

BG, UL, CSA

0,28 kg/0,62 lb

●/-

All dimensions in mm (inch)



Forced disconnect in forward and reverse travel AHZ

For special safety applications the forced disconnection of the NC contacts is not only achieved in the forward direction, but also in the reverse direction (back to standard position). For operator safety applications the roller must be positively guided in both directions.