

Offered patch cables with different color codings make your networking systems easy to identify and replace. Our Category 6/5e patch cords are available for 5 colors(yellow, red, green, blue, and gray) for identification and easy operation.

CAT.5e:

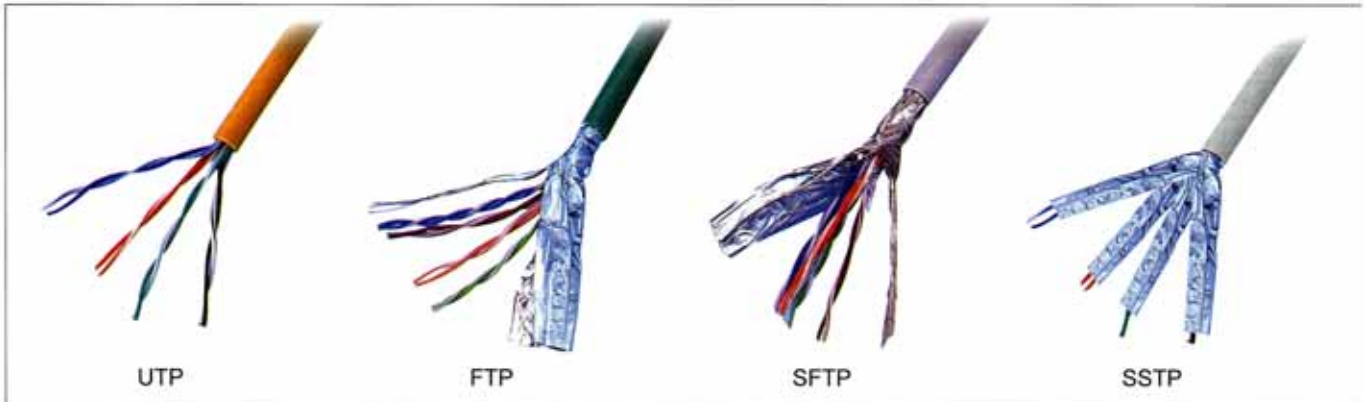
- UTP: Unshielded Twisted Pair available for stranded in 24AWG
- FTP (or STP): Foil Shielded Twisted Pair available for stranded in 26AWG
- SFTP: Braid Screened, Foil Shielded Twisted Pair available for stranded in 26AWG

CAT.6:

- UTP: Unshielded Twisted Pair available for stranded in 24AWG
- SSTP: Braid Screened, Foil Shielded for Each Twisted Pair available for stranded in 26AWG

Cable Type:

- URT=UTP stranded
- SRT=FTP stranded
- SST=SFTP stranded
- SPT=SSTP stranded



Cat.6/5e Patch Cord

UTP stranded Patch Cord with latch protector, 4 pair, T568B wiring



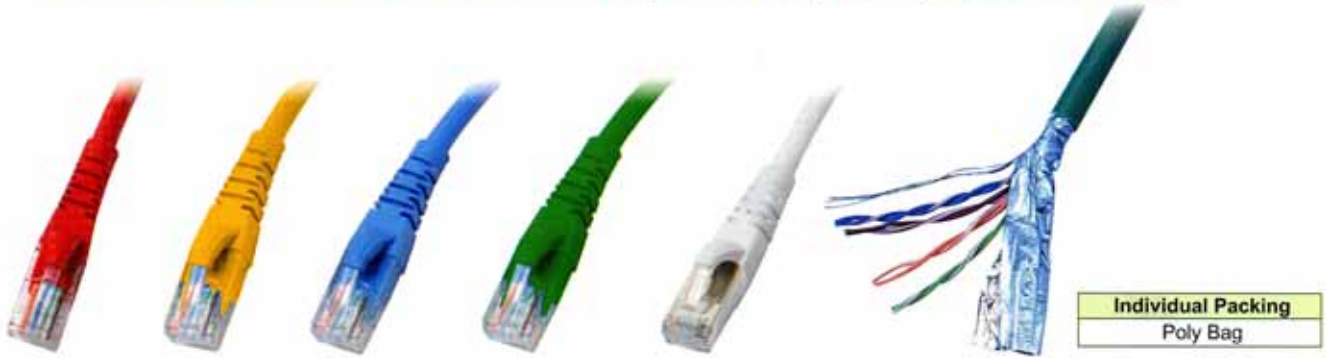
Individual Packing
Poly Bag

PATCH CORD

Model No.	Category	Length(Meter)	AWG	Color
7URT-4EF4N50C-4B2	Cat.5e	0.5	24	Red
7URT-4EF4N50C-4B4	Cat.5e	0.5	24	Yellow
7URT-4EF4N50C-4B5	Cat.5e	0.5	24	Green
7URT-4EF4N50C-4B6	Cat.5e	0.5	24	Blue
7URT-4EF4N50C-4B8	Cat.5e	0.5	24	Gray
7URT-4EF4N01M-4B2	Cat.5e	1	24	Red
7URT-4EF4N01M-4B4	Cat.5e	1	24	Yellow
7URT-4EF4N01M-4B5	Cat.5e	1	24	Green
7URT-4EF4N01M-4B6	Cat.5e	1	24	Blue
7URT-4EF4N01M-4B8	Cat.5e	1	24	Gray
7URT-4EF4N02M-4B2	Cat.5e	2	24	Red
7URT-4EF4N02M-4B4	Cat.5e	2	24	Yellow
7URT-4EF4N02M-4B5	Cat.5e	2	24	Green
7URT-4EF4N02M-4B6	Cat.5e	2	24	Blue
7URT-4EF4N02M-4B8	Cat.5e	2	24	Gray
7URT-46F4U50C-4B2	Cat. 6	0.5	24	Red
7URT-46F4U50C-4B4	Cat. 6	0.5	24	Yellow
7URT-46F4U50C-4B5	Cat. 6	0.5	24	Green
7URT-46F4U50C-4B6	Cat. 6	0.5	24	Blue
7URT-46F4U50C-4B8	Cat. 6	0.5	24	Gray
7URT-46F4U01M-4B2	Cat. 6	1	24	Red
7URT-46F4U01M-4B4	Cat. 6	1	24	Yellow
7URT-46F4U01M-4B5	Cat. 6	1	24	Green
7URT-46F4U01M-4B6	Cat. 6	1	24	Blue
7URT-46F4U01M-4B8	Cat. 6	1	24	Gray
7URT-46F4U02M-4B2	Cat. 6	2	24	Red
7URT-46F4U02M-4B4	Cat. 6	2	24	Yellow
7URT-46F4U02M-4B5	Cat. 6	2	24	Green
7URT-46F4U02M-4B6	Cat. 6	2	24	Blue
7URT-46F4U02M-4B8	Cat. 6	2	24	Gray

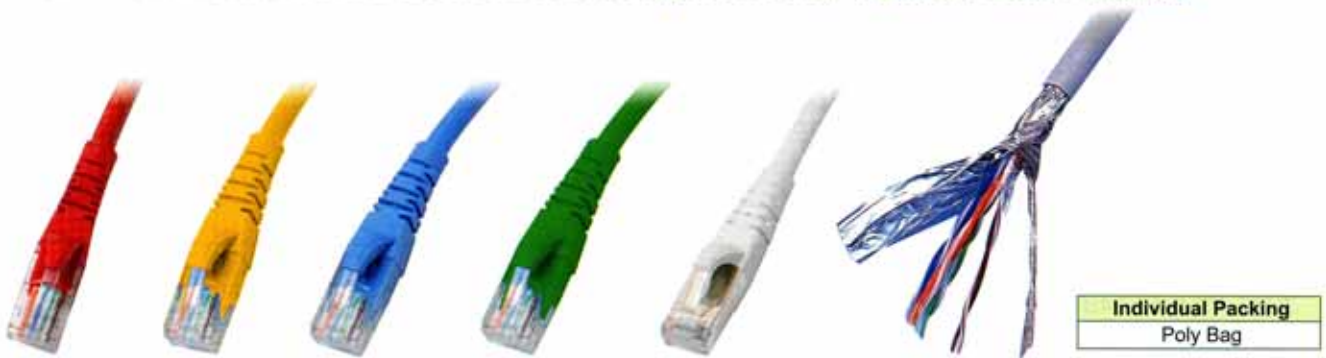
Cat.6/5e Patch Cord

FTP stranded Patch Cord with latch protector, 4 pair, T568B wiring



Model No.	Category	Length(Meter)	AWG	Color
7SRT-4EF4F50C-4B2	Cat.5e	0.5	26	Red
7SRT-4EF4F50C-4B4	Cat.5e	0.5	26	Yellow
7SRT-4EF4F50C-4B5	Cat.5e	0.5	26	Green
7SRT-4EF4F50C-4B6	Cat.5e	0.5	26	Blue
7SRT-4EF4F50C-4B8	Cat.5e	0.5	26	Gray
7SRT-4EF4F01M-4B2	Cat.5e	1	26	Red
7SRT-4EF4F01M-4B4	Cat.5e	1	26	Yellow
7SRT-4EF4F01M-4B5	Cat.5e	1	26	Green
7SRT-4EF4F01M-4B6	Cat.5e	1	26	Blue
7SRT-4EF4F01M-4B8	Cat.5e	1	26	Gray
7SRT-4EF4F02M-4B2	Cat.5e	2	26	Red
7SRT-4EF4F02M-4B4	Cat.5e	2	26	Yellow
7SRT-4EF4F02M-4B5	Cat.5e	2	26	Green
7SRT-4EF4F02M-4B6	Cat.5e	2	26	Blue
7SRT-4EF4F02M-4B8	Cat.5e	2	26	Gray

SFTP stranded Patch Cord with latch protector, 4 pair, T568B wiring



Model No.	Category	Length(Meter)	AWG	Color
7SST-4EF4F50C-4B2	Cat.5e	0.5	26	Red
7SST-4EF4F50C-4B4	Cat.5e	0.5	26	Yellow
7SST-4EF4F50C-4B5	Cat.5e	0.5	26	Green
7SST-4EF4F50C-4B6	Cat.5e	0.5	26	Blue
7SST-4EF4F50C-4B8	Cat.5e	0.5	26	Gray
7SST-4EF4F01M-4B2	Cat.5e	1	26	Red
7SST-4EF4F01M-4B4	Cat.5e	1	26	Yellow
7SST-4EF4F01M-4B5	Cat.5e	1	26	Green
7SST-4EF4F01M-4B6	Cat.5e	1	26	Blue
7SST-4EF4F01M-4B8	Cat.5e	1	26	Gray
7SST-4EF4F02M-4B2	Cat.5e	2	26	Red
7SST-4EF4F02M-4B4	Cat.5e	2	26	Yellow
7SST-4EF4F02M-4B5	Cat.5e	2	26	Green
7SST-4EF4F02M-4B6	Cat.5e	2	26	Blue
7SST-4EF4F02M-4B8	Cat.5e	2	26	Gray

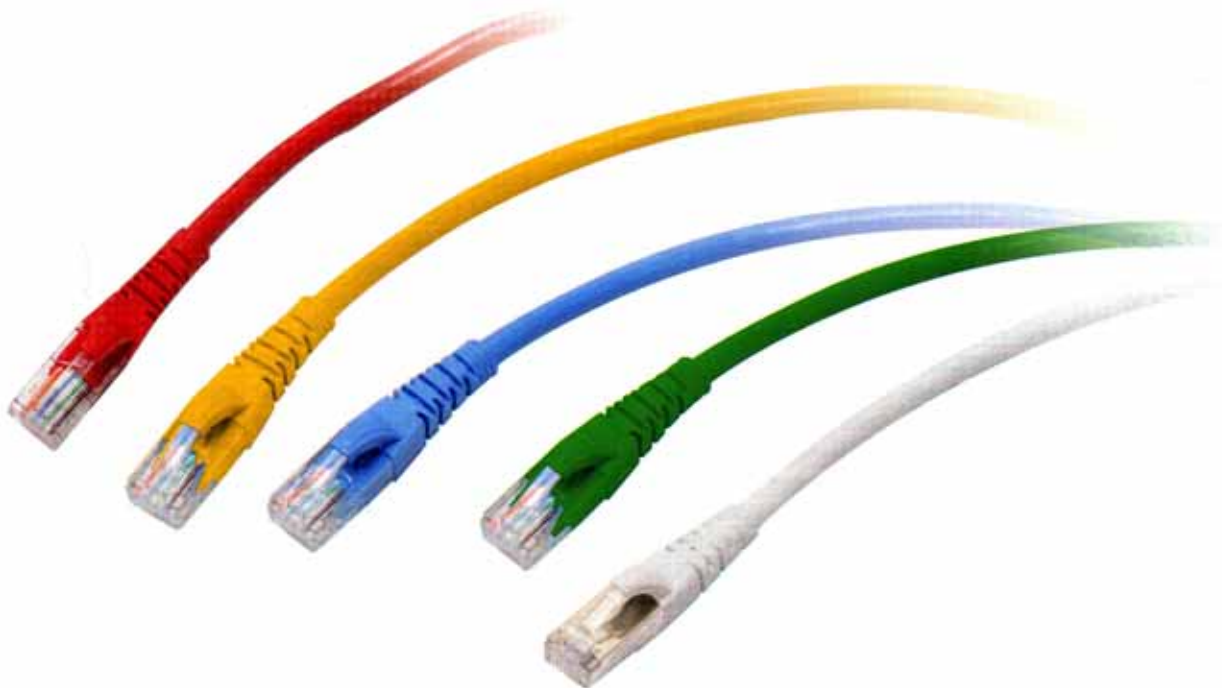
Cat.6/5e Patch Cord

SSTP stranded Patch Cord with latch protector, 4 pair, T568B wiring



Individual Packing
Poly Bag

Model No.	Category	Length(Meter)	AWG	Color
7SPT-46F4250C-4B2	Cat. 6	0.5	26	Red
7SPT-46F4250C-4B4	Cat. 6	0.5	26	Yellow
7SPT-46F4250C-4B5	Cat. 6	0.5	26	Green
7SPT-46F4250C-4B6	Cat. 6	0.5	26	Blue
7SPT-46F4250C-4B8	Cat. 6	0.5	26	Gray
7SPT-46F4201M-4B2	Cat. 6	1	26	Red
7SPT-46F4201M-4B4	Cat. 6	1	26	Yellow
7SPT-46F4201M-4B5	Cat. 6	1	26	Green
7SPT-46F4201M-4B6	Cat. 6	1	26	Blue
7SPT-46F4201M-4B8	Cat. 6	1	26	Gray
7SPT-46F4202M-4B2	Cat. 6	2	26	Red
7SPT-46F4202M-4B4	Cat. 6	2	26	Yellow
7SPT-46F4202M-4B5	Cat. 6	2	26	Green
7SPT-46F4202M-4B6	Cat. 6	2	26	Blue
7SPT-46F4202M-4B8	Cat. 6	2	26	Gray



PATCH CORD