

# Cat.6/5e UTP Patch Panel with Top Entry Type

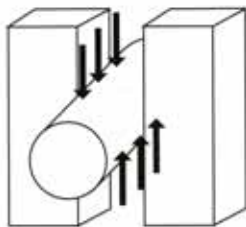


Individual Packing  
Color Box

### Specification

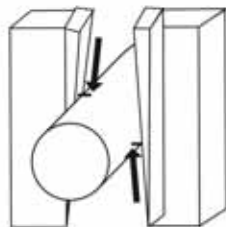
- Panel: 1.5mm thick metal, black paint
- Jack: RJ45 8P8C, PBT UL94V-0 Ivory color, 50 micro inches gold plating over nickel plating
- Terminal Block: New version 110D connector, PC UL94V-0, white color
- Jack Bracket Set: ABS UL94V-0

#### Old IDC Block



When one core wire is installed into one old IDC pin, it is pierced with two parallel blades.

#### New IDC Block



New IDC is similar to one pair of scissors. When one core wire is installed into one new IDC pin, the wire is pricked first with two sharp blades and then clipped.

By simulating one pair of scissors, new IDC guarantees more precise puncture of wire core after clipping with two sharp blades.

port indication

UL Cat.5 Certified

New 110D terminal block can be used for both of "Krone & 110" impact tool

CABLE HOLDER

New design of the cable holder can directly plug and lock onto P.C.B. It is more convenient for cable management. Each module with one cable holder.

CABLE TIE

Every module built-in one jacket bracket with two cable tie chassis which use cable tie to hold cable jacket tightly to avoid the cable moving away.

**Remark:**  
Cable tie and cable holder are available for 45 degree angle and top entry type unshielded patch panel.

Model No.	Description
7P-12TK11CEC-BK	12 Ports CAT.5e UTP Patch Panel
7P-12TK11C6C-BK	12 Ports CAT.6 UTP Patch Panel
7P-24TK11CEC-BK	24 Ports CAT.5e UTP Patch Panel
7P-24TK11C6C-BK	24 Ports CAT.6 UTP Patch Panel
7P-32TK11CEC-BK	32 Ports CAT.5e UTP Patch Panel
7P-32TK11C6C-BK	32 Ports CAT.6 UTP Patch Panel
7P-48TK11CEC-BK	48 Ports CAT.5e UTP Patch Panel
7P-48TK11C6C-BK	48 Ports CAT.6 UTP Patch Panel

## CAT.6/5e Shielded Patch Panel



**Individual Packing**  
Inner Box + Color Label

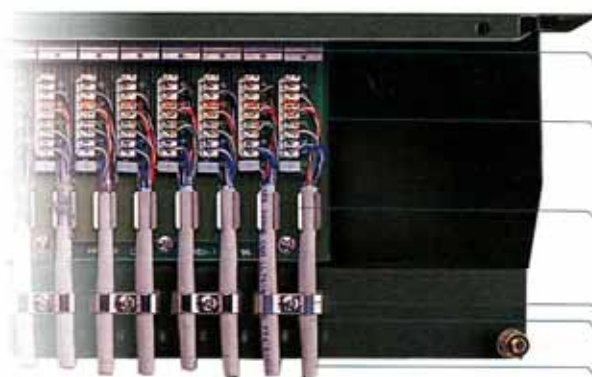
Our high impact patch panels comply with TIA/EIA-568-B.2 Category 5e and TIA/ EIA-568-B.2.1 Category 6 performance requirements. With professional structure design, the high impact series patch panels are extremely durable for punching down strongly. With 110 and Krone dual type IDC design, accepts 110 and Krone type punch down tools, and 22-26AWG solid and stranded UTP cables. Colors printing T568A & T568B wiring colors on the IDC, makes it easy for the engineer to install the wires correctly.

### Features

- Easy to open cover by simple tool
- Grounding method with better performance
- Port numbers identify the allocation
- GHMT Cat.6 Perm. Link & Cat.5e connecting hardware certified performance.

### Specification

- Top & Bottom Case: Metal with black paint
- Jack: RJ45 jack, 50u" gold, PBT 94V-0
- Terminal Block: New 110D version
- Cable Holder: Phosphor bronze with tin plating
- Cable Clip: Steel with tin plating
- Ground Wire: 22AWG terminal, 450mm



1. Full shielded RJ45 jack
2. Terminal Block: Combine two colors printing T568A & B wires to save one stock, drain wire should be punched down into pin 9th (grounded) location
3. Cable Holder: Press foil or braid shielded to contact ground, and keep the cable straight
4. Cable Clip Screw: Hold the two cables tightly by screws at one time
5. For Cable Tie: Optional choice for stronger security
6. Port Numbering: Identify the exact port numbering on the back side, easy and effective installation.

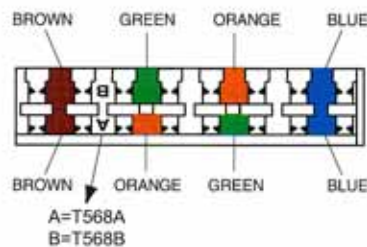
Model No.	Description
7PPS-16CEK1-BC	16 Ports CAT.5e FTP Patch Panel
7PPS-16C6K1-BC	16 Ports CAT.6 FTP Patch Panel
7PPS-24CEK1-BC	24 Ports CAT.5e FTP Patch Panel
7PPS-24C6K1-BC	24 Ports CAT.6 FTP Patch Panel

# Cat.6/5e Mini 12 Port Patch Panel



**Individual Packing**  
Inner Box + Color Label

Our Cat.6/5e patch panels are used for high speed LAN's transmission. These panels were developed with a proprietary printed circuit board technology which results in performance to meet EIA/TIA 568A Category 5E Enhanced & Category 6 specifications. The new version of 110D terminal block can be used for both Krone & 110 tools, and has 568A and 568B color codes both on the top of new version 110D IDC for easy installation.



### Features

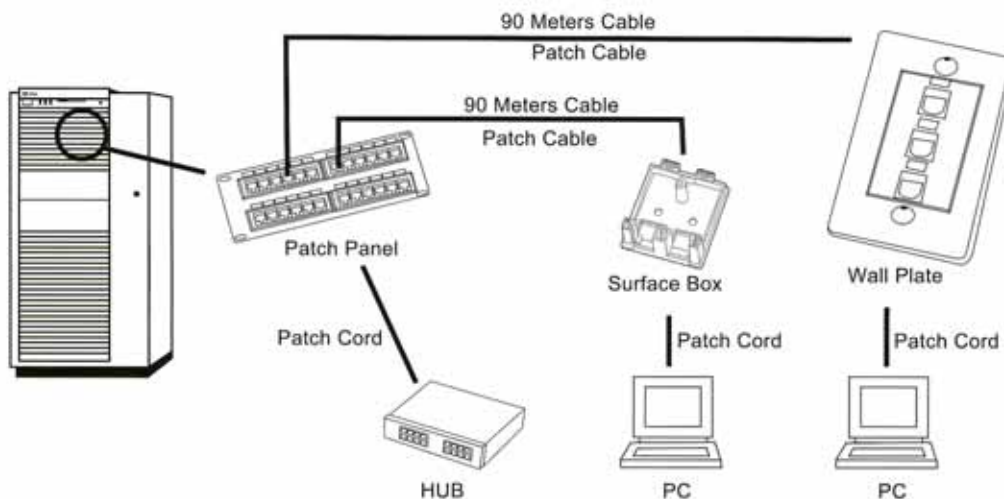
- Can be used with 110 and Krone punch down tools
- Meets T568A & T568B standards
- Supplied w/mtg bracket
- Great for home use

### Specification

- Panel: 1.5mm thick metal, black paint
- Jack: RJ45 8P8C, PBT UL94V-0 Ivory color, 50 micro inches gold plating over nickel plating
- Terminal Block: New version 110D connector, PC UL94V-0, white color
- Jack Bracket Set: ABS UL94V-0

### Color Coding Information

IDC Terminals	T568A Pair/Wire Color	T568B Pair/Wire Color
PIN5 PIN4	1 White/Blue Blue	1 White/Blue Blue
PIN1 PIN2	3 White/Green Green	2 White/Orange Orange
PIN3 PIN6	2 White/Orange Orange	3 White/Green Green
PIN7 PIN8	4 White/Brown Brown	4 White/Brown Brown



\* Cabling Max. 100 Meters between HUB and PC.

Model No.	Description
7PMV12T-K11-CEC/BK	CAT.5e Mini-Vertical 12 Ports Patch Panel
7PMV12T-K11-C6C/BK	CAT.6 Mini-Vertical 12 Ports Patch Panel