

SERIES LX TOWERLITES

- Four Diameter Sizes
(1.7" / 2.5" / 3.5" / 5.4")
 - Nine Mounting Types
 - 4W, 10W, 25W, & 40W
 - Horn & Rotating Beacon
 - Full 360° Visibility
 - Stainless Steel Pedestal
 - Polycarbonate Lens
-
- NEMA 3R, 12, 13, IP54
 - 12-240VAC, 12-24VDC
 - Operating Temperature
-22°F to 122°F

TOWER SECTOR / TOWERLITES

**STACK LIGHT SYSTEMS TO MONITOR
AND TRANSMIT VISUAL & AUDIBLE WARNINGS**

***THE SOLUTION TO SAFETY,
SECURITY & PRODUCTIVITY***



LUXOR

Web: www.calcentron.com

E-mail: sales@calcentron.com

Cal-Centron Wholesale Co

3225 Tomahawk Dr.
Stockton, CA 95205

Phone: 800.252.2094 / 209.942.2094
Fax: 209.942.2163

SERIES LX - TOWERLITE SINGLE-LIGHT WARNING BEACONS

ROTATING BEACONS - SERIES LX

LX4 size only.
160 revolutions per minute +/-30
40W bulb (110/240V), 45W bulb (12/24V)
Contact factory for optional halogen bulb.

Vertical Mount



Horizontal Mount



HOW TO ORDER:

LX4VR-

VOLTAGE
M (12VAC/DC)
G (24VAC)
N (24VDC)
A (110VAC)
C (240VAC)

LENS COLOR
1 (Blue)
2 (Amber)
3 (Red)
4 (Green)
5 (Yellow)
6 (Clear)



5.4" Diameter
LX4VR-A3T

Size	Voltage Suffix	List Price
LX4	A, C	\$215.00
LX4	M, N, G	\$240.00

LX4HR-

VOLTAGE
M (12VAC/DC)
G (24VAC)
N (24VDC)
A (110VAC)
C (240VAC)

LENS COLOR
1 (Blue)
2 (Amber)
3 (Red)
4 (Green)
5 (Yellow)
6 (Clear)



5.4" Diameter
LX4VRH-A3T

XENON STROBE BEACONS

Very bright, high energy discharge
65 flashes per minute +/-10
LX2, LX3 - Two joules...LX4 - Six joules

Vertical Mount



Horizontal Mount



HOW TO ORDER:

LX VX

SIZE
2
3
4

VOLTAGE
M (12VAC/DC)
G (24VAC)
N (24VDC)
A (110VAC)
C (240VAC)

LENS COLOR
1 (Blue)
2 (Amber)
3 (Red)
4 (Green)
5 (Yellow)
6 (Clear)



3.5" Diameter
LX3VX-G2

Size	Voltage Suffix	List Price
LX2	A, C	\$150.00
LX2	M, N, G	\$160.00
LX3	A, C	\$180.00
LX3	M, N, G	\$255.00
LX4	A, C	\$280.00
LX4	M, N, G	\$340.00

LX HX

SIZE
2
3
4

VOLTAGE
M (12VAC/DC)
G (24VAC)
N (24VDC)
A (110VAC)
C (240VAC)

LENS COLOR
1 (Blue)
2 (Amber)
3 (Red)
4 (Green)
5 (Yellow)
6 (Clear)

2.5" to 5.4"
Diameter



5.4" Diameter
LX4VXH-A3

Xenon Spare Bulbs:
LX2, LX3 #LRX2J* \$36.00 List
LX4 #LRX6J* \$68.00 List
*Use voltage suffix above

Xenon Strobe Beacon (LX4 Only) available with horn...
Add "H" to the part number.
ex. -LX4VXH-A3
Price adder...\$130 List

SERIES LX BEACONS

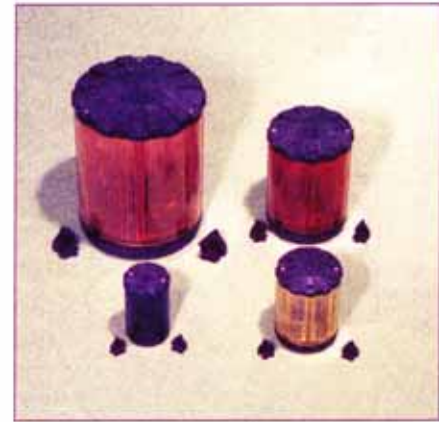
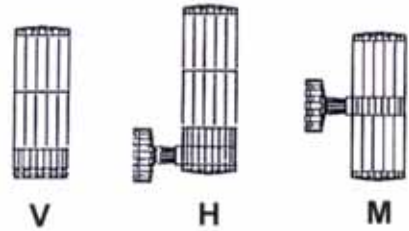
SERIES LX - TOWERLITE LIST PRICING SYSTEM

SERIES LX

Factory Assembled Units:

Towerlite Size	LX1	LX2	LX3	LX4
Per Light Stack <i>(Price per light stack level includes bulb, socket & lens)</i>	\$30	\$35	\$60	\$90
Mounting Type				
V	\$30	\$35	\$40	\$75
H	\$40	\$45	\$60	\$90
M	\$42	\$50	\$70	\$110
Horn, Rotating Beacon				
H	\$60	\$70	\$100	\$130
R (12, 24V)	-	-	-	\$175
(110, 240V)	<i>LX4 size only...</i>	<i>Type "R" replaces cost of one "per stack" price</i>		\$165
Circuit Type				
F (No extra cost)	0	0	0	0
C (12, 24V)	\$20	\$40	\$60	\$60
C (110, 240V)	\$18	\$36	\$40	\$40
B	\$18	\$30	\$32	\$38

Mounting Types:



Snap-on mounting feet provided as standard on mounting types V, H, M, PR & BMC

Factory Assembled Luxor Towerlite Part Number & Pricing Worksheet:

LX	<u>2</u>	<u>V</u>	<u>X</u>	<u>F-</u>	<u>M</u>	<u>4</u>	<u>5</u>	<u>3</u>	<u>1</u>	<u>W</u>	
		+\$35	+\$0	+\$0	+\$0	+\$35	+\$35	+\$35	+\$35	+\$0	=\$175 List
LX	<u>4</u>	<u>H</u>	<u>H</u>	<u>R</u>	<u>C-</u>	<u>A</u>	<u>4</u>	<u>5</u>	<u>3</u>	<u>I</u>	
		+\$90	+\$130	+\$165	+\$40	+\$0	+\$90	+\$90	<i>included with "R"</i>	+\$0	=\$605 List
LX	<i>size</i>	<i>mtg type</i>	<i>H / R / X</i>	<i>circuit</i>	<i>voltage</i>	<i>lens</i>	<i>lens</i>	<i>lens</i>	<i>lens</i>	<i>lens</i>	
	___	___	___	___	___	___	___	___	___	___	
	\$ ___	\$ ___	\$ ___	\$ ___	\$ ___	\$ ___	\$ ___	\$ ___	\$ ___	\$ ___	

Replacement Lens Kit

Size	LX1	LX2	LX3	LX4
Part Number	LX1LK*	LX2LK*	LX3LK*	LX4LK*
List Price	\$10.00	\$12.00	\$20.00	\$35.00

Spare Bulbs

Size	LX1	LX2	LX3	LX4
Part Number	LRBA9S4W*	LRBA9S10W*	LRBA15D25W*	LRBA15D40W*
List Price	\$7.00	\$7.00	\$8.00	\$8.00

* Must specify voltage... *M (12VAC/DC) *G (24VAC) *N (24VDC)
*A (110VAC) *C (240VAC)

* Must specify lens color... *1 (blue) *2 (amber) *3 (green)
*4 (green) *5 (yellow) *6 (clear)

SERIES LX - TOWERLITES

FACTORY ASSEMBLED TOWERLITES



HOW TO ORDER:

example... **LX2 V X C- A 453 W**

Towerlite Diameter & Watt		
LX1=1.7"	(45mm)	4W
LX2= 2.5"	(65mm)	10W
LX3= 3.5"	(90mm)	25W
LX4= 5.4"	(136mm)	40W

Mounting Type
V= Vertical Flat Base
H= Horizontal Base (4 lights and/or horn max.)
M= Middle Base (2 lights & 2 horns max. 1 of each on top & bottom)

Horn and Rotating Beacon
H= Horn, mounted on top only. A horn cannot be added to a maximum light stack... deduct one stack.
R= Rotating Beacon, mounted on top only, or below horn... <i>available on LX4 size only</i>
X= Add if no horn or beacon

Circuit Type
F= Continuous Light... Customer provides On/Off Circuit
C= Flashing or Continuous Light... With Electronic Control Module
B= Alternating Lights only...

Wire Connection Type*
T= Terminal Block
W= Wire Harness

Lens Color Base to Top	
1=	Blue
2=	Amber
3=	Red
4=	Green
5=	Yellow
6=	Clear
Size	Max.Stack
LX1	3
LX2	5
LX3	6
LX4	6

Voltage Suffix	
Suffix	Voltage
-M	12VAC/DC
-G	24VAC
-N	24VDC
-A	110VAC
-C	240VAC

Individual component base kits and light socket boards available upon request. Contact factory for availability.

*Type "T" standard. On certain styles, such as the "V" mount LX1 & LX2. With more than one light stack and / or horn, type "T" will not fit due to size limitations. Therefore, a Type "W" 32" wiring harness is provided as standard. Type "W" may be available for other sizes and styles. Contact factory for availability and price.



SERIES LX

SERIES LX - TOWERLITE MOUNTING ACCESSORIES

Type "V" Vertical Mount Only



RIGID PEDESTAL-TYPE PR

Size	LX1	LX2	LX3	LX4
Part Number	LX1PRA	LX2PRA	LX3PRA	LX4PRA
List Price	\$20.00	\$27.00	\$38.00	\$64.00
Part Number	LX1PRB	LX2PRB	LX3PRB	-
List Price	\$32.00	\$45.00	\$54.00	-

FLEXIBLE PEDESTAL-TYPE PF

Size	LX1	LX2	LX3	LX4
Part Number	LX1PF	LX2PF	LX3PF	-
List Price	\$32.00	\$48.00	\$68.00	-



PIPE HOLDING BASE-TYPE BT

Size	LX1	LX2	LX3	LX4
Part Number	LX1BT	LX2BT	LX3BT	LX4BT
List Price	\$6.00	\$12.00	\$16.00	\$18.00



MODULAR ROW BASE-TYPE BMC

Size	LX1	LX2	LX3	LX4
Part Number	LX1BMC	LX2BMC	LX3BMC	-
List Price	\$18.00	\$20.00	\$28.00	-



Note: One BMC mounts two lights...multiple BMC bases can be snapped together.

SOLID WIRE ACCESS BASE-TYPE BC

Size	LX1	LX2	LX3	LX4
Part Number	LX1BC	LX2BC	-	-
List Price	\$18.00	\$20.00	-	-



PIPE ADAPTER 1/2" NPT-TYPE PA

Size	LX1	LX2	LX3	LX4
Part Number	-	LX2PA	LX3PA	LX4PA
List Price	-	\$16.00	\$20.00	\$22.00



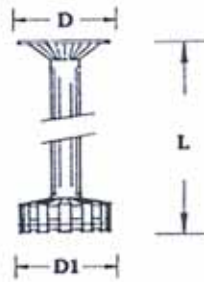
-Mounting accessories not assembled

-Mounting feet provided as standard for mounting types V, H & M and accessories PR and BMC.

SERIES LX - TOWERLITE MOUNTING ACCESSORY DIMENSIONS

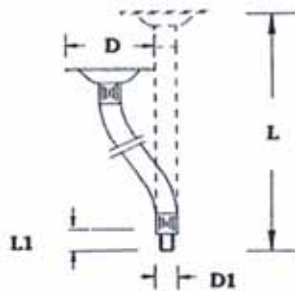
MOUNTING ACCESSORIES

Rigid Pedestal-Type PR



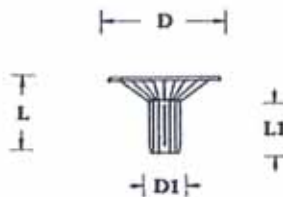
	LX1	LX2	LX3	LX4
	PRA	PRA	PRA	PRA
"D"	1.50"	2.28"	3.19"	5.00"
"D1"	1.97"	2.56"	3.54"	5.35"
"L"	7.09"	9.06"	9.25"	17.72"
	PRB	PRB	PRB	-
"D"	1.50"	2.28"	3.19"	-
"D1"	1.97"	2.56"	3.54"	-
"L"	18.90"	24.80"	25.00"	-

Flexible Pedestal-Type PF



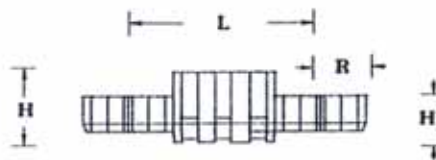
	LX1	LX2	LX3	LX4
	PF	PF	PF	-
"D"	1.50"	2.28"	3.19"	-
"D1"	m10x1	m12x1.5	m14x1.5	-
"L1"	.59"	.79"	.79"	-
"L"	10.04"	14.57"	18.50"	-

Pipe Holding Base-Type BT



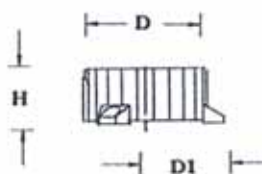
	LX1	LX2	LX3	LX4
	BT	BT	BT	BT
"D"	1.50"	2.28"	3.19"	5.00"
"D1"	.55"	.71"	.91"	1.30"
"L1"	.79"	1.06"	1.57"	1.65"
"L"	1.18"	1.57"	2.17"	2.36"

Modular Row Base-Type BMC



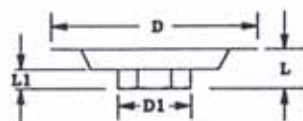
	LX1	LX2	LX3	LX4
	BMC	BMC	BMC	-
"H1"	.83"	.83"	.83"	-
"H"	1.26"	1.34"	1.42"	-
"R"	.83"	1.22"	1.69"	-
"L"	2.76"	3.94"	6.22"	-

Side Wire Access Base-Type BC



	LX1	LX2	LX3	LX4
	BC	BC	-	-
"D"	2.76"	2.76"	-	-
"D1"	3.54"	3.54"	-	-
"H"	1.26"	1.26"	-	-

Pipe Adapter-Type PA



	LX1	LX2	LX3	LX4
	-	PA	PA	PA
"D"	-	2.27"	3.18"	4.98"
"D1"	-	1.00"	1.00"	1.00"
"L1"	-	0.39"	0.39"	0.39"
"L"	-	0.78"	0.78"	0.98"

SERIES LX - TOWERLITE TECHNICAL INFORMATION

GENERAL:

Luxor Towerlites are a complete signaling system. A variety of sizes, mounting styles and accessories provides for a convenient method of monitoring the status of systems and machinery.

RATINGS:

NEMA 3R, 12, 13, IP54

Voltages: 12-240VAC, 12-24VDC

Bulb Wattage: 4, 10, 25, 40W

Lamp Life: 24VDC 1800 hrs, 120VAC 2000 hrs

Operating Temperature: -22°F to 122°F

Vibration Proof: to DIN regulation 40 046

Insulation Ratings IEC 598, EN 60.598-1

CEI 34-21, VDE 0710

NF C 20 030

Wiring: maximum capacity, two size 16 wires
or one size 14.

Audible Horn: IP 30 rated; decibels to 1 meter,
LX1-70 db, LX2-80 db
LX3-85 db, LX4-88 db

RELIABILITY OF MATERIALS:

Highly reliable materials have been selected for Luxor to ensure a trouble-free, long life.

- Lexan polycarbonate for the lens units.
- Noryl reinforced glass for the structure.
- Tencil highly thermic resistant for internal parts.
- Stainless steel for all external screws.
- High ultimate strength connecting cables.
- Stainless steel rigid pedestal.
- Aluminum covered steel for the flexible pedestal (cataphoresis treated & epoxy painted)

LIGHTING CONTROL CIRCUIT TYPES:

Type F- Independent of Towerlite. The machine PLC, relays or other control methods generate a continuous, blinking or flashing light circuit for each bulb.

Type C- A special internal electronic circuit board is provided which allows each stack bulb to be controlled independently, either continuous or flashing at 110 per minute +/-20. No external flashing circuit is required. Type C has protection for over current, over voltage and polarity inversion in DC charge.

Type B- Alternating flashes between two lights and horns 110 flashes per minute, +/-20.

Type R- Rotating Beacon, LX4 size only. 160 revolutions per minute, +/-30.

SAFETY AND SECURITY IN OPERATION:

In the stacked column version of Luxor, there are a series of built-in safety features:

- Patented multiple printed circuit boards with the bulbs incorporated that cuts power to the Towerlite when the unit is opened. Changing the bulb is done in total safety.
- Proper spacing is maintained between the tracks of the circuit, according to international regulations.
- The tracks of the PCB are scaled to avoid all elements from being powered simultaneously with eventual damage to the electronic circuit.
- Bayonet-style bulbs for quick mounting.
- Lampholders have internal resistance to avoid a short circuit in case of filament breakage.
- No additional rewiring or removing of stacks to replace a bulb or add an additional light.



SAFE, CONVENIENT OPERATION AND MAINTAINENCE!

By simply opening the tower cap and removing the patented light socket board, the power is disconnected allowing for safe and easy bulb replacement.